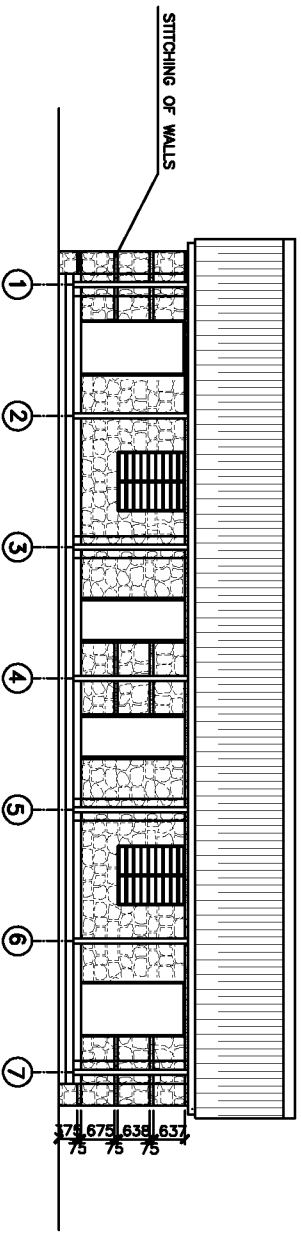


PLAN



FRONT ELEVATION

NOTE:
 1. ONE 16 mm DIA BAR GROUTED WITH CEMENT SAND SLURRY IS TO BE KEPT AT 17 PLACES AS SHOWN IN THE DRAWING.
 2. DOORS ARE TO BE KEPT OPEN WHILE CONDUCTING THE CLASSES.

JOB TITLE

SCHOOL BUILDING
 (HILLY REGION)

SHEET TITLE

PLAN & ELEVATION

SCALE
 0 0.5 1.0 2.0 3.0m

BASIC AND PRIMARY
 EDUCATION PROGRAMME (II)

GOVERNMENT OF NEPAL
 MINISTRY OF EDUCATION & SPORTS
 DEPARTMENT OF EDUCATION

SANOJHMI
 BHAKTAPUR
 NEPAL

TEL NO. 977-1-631075
 977-1-633027
 FAX NO. 977-1-630088

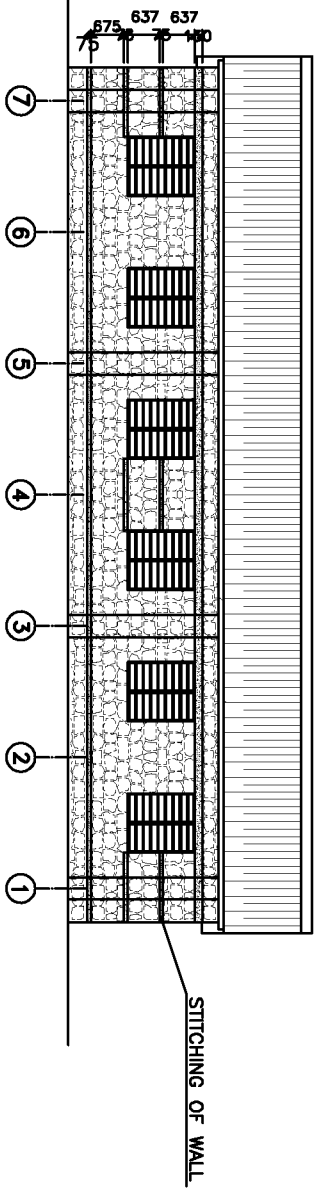
CHECKED BY

APPROVED BY:

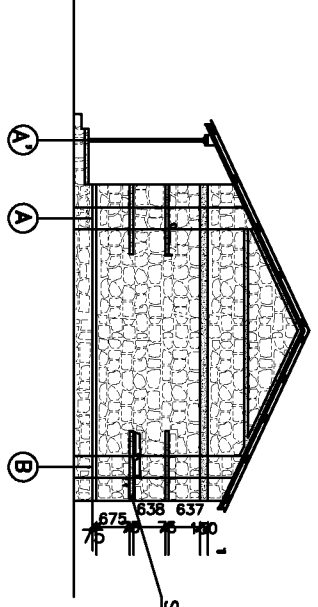
DATE 23.10.2000

Drawing code H-S-Att 1

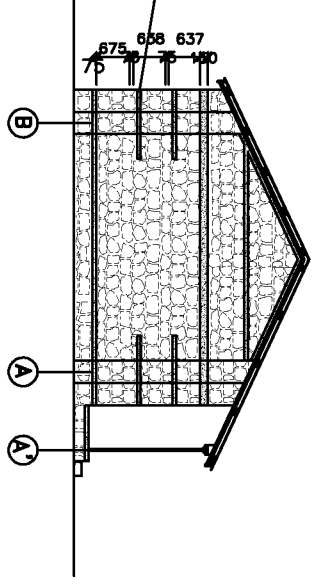
Sheet no 1



BACK ELEVATION

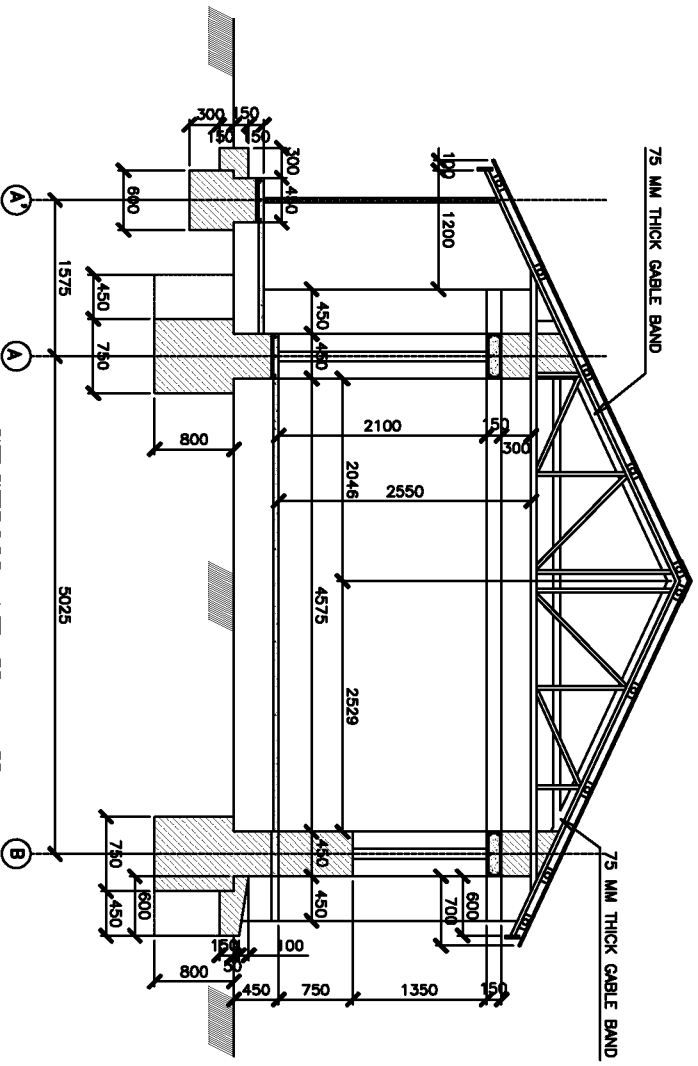


SIDE ELEVATION



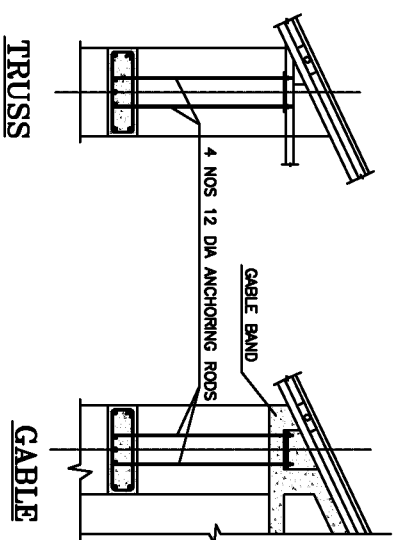
SIDE ELEVATION

JOB TITLE		SCHOOL BUILDING (HILLY REGION)	
SHEET TITLE		PLAN & ELEVATION	
SCALE	0.5 1.5 2.5 0 1.0 2.0 3.0m	BASIC AND PRIMARY EDUCATION PROGRAMME (II)	
GOVERNMENT OF NEPAL MINISTRY OF EDUCATION & SPORTS DEPARTMENT OF EDUCATION SANOThMI BHAKTAPUR NEPAL. TEL NO. 977-1-631075 977-1-633027 FAX NO. 977-1-630088			
CHECKED BY			
APPROVED BY:			
DATE	23.10.2000		
Drawing code	H-S-Att 1		
Sheet no	2		

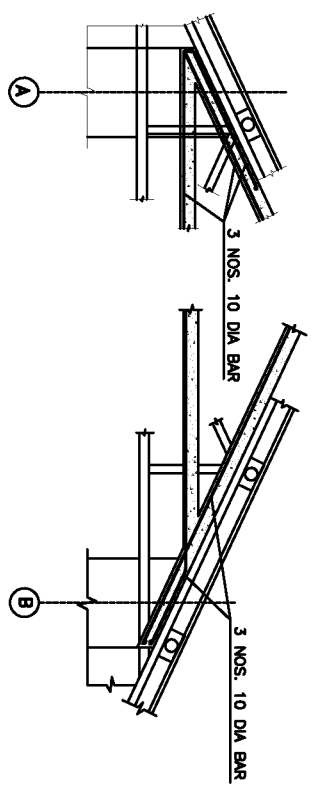


SECTION AT X - X

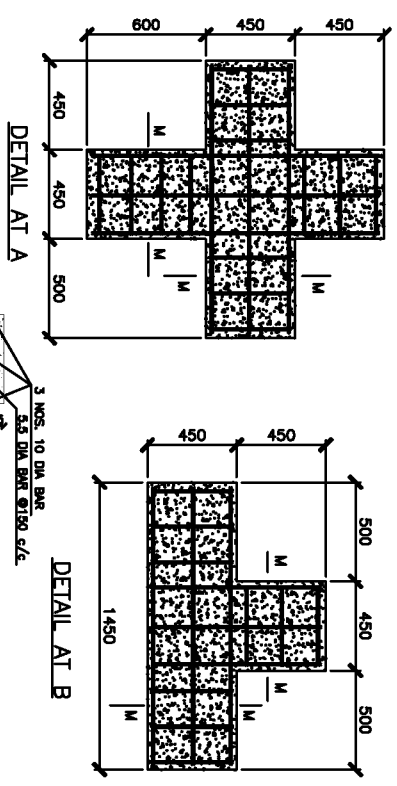
CONNECTION OF TRUSS/GABLE WITH LINTEL BAND



CABLE DETAILS AT MAIN WALLS

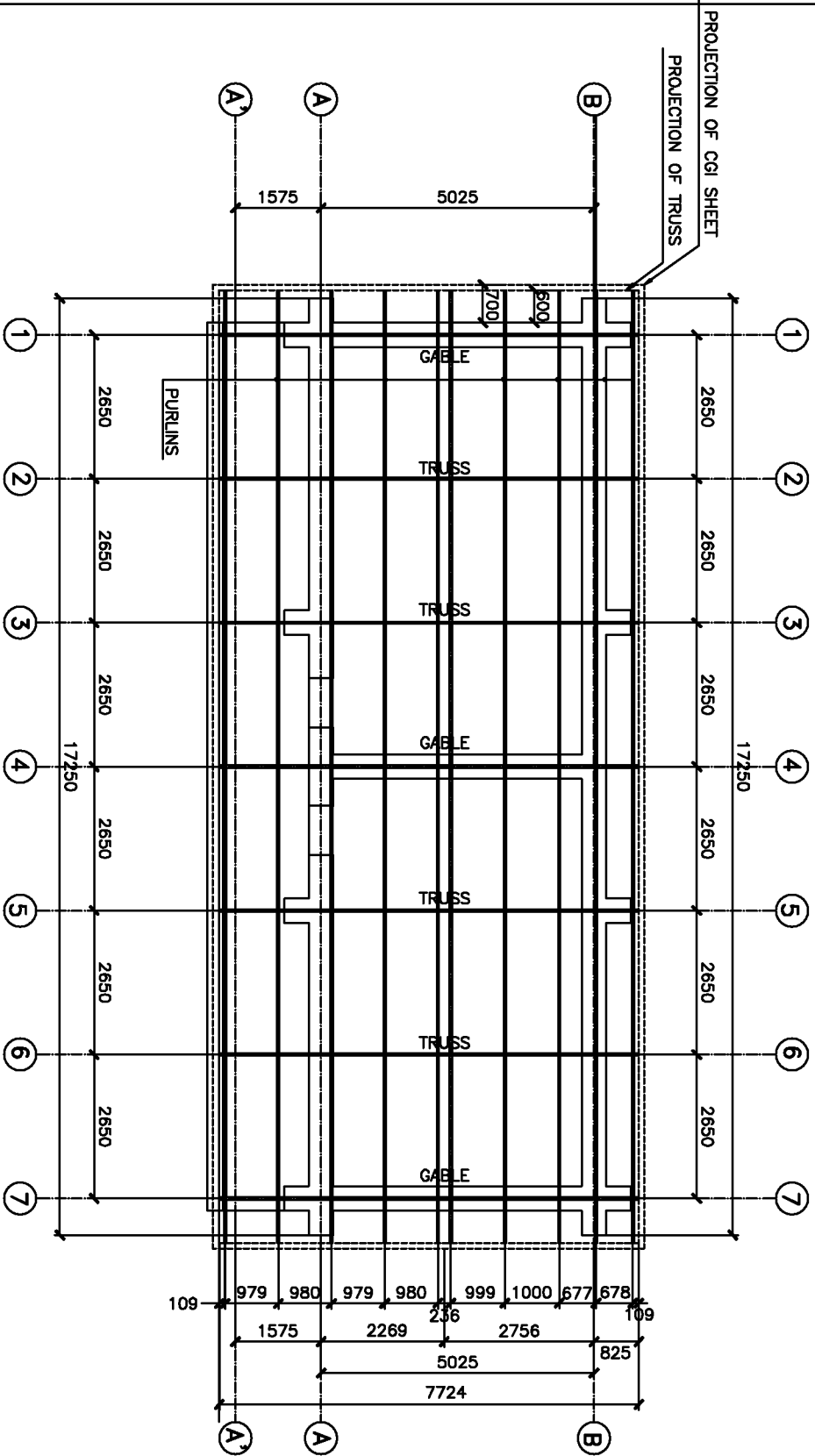


STITCHING OF WALLS DETAILS



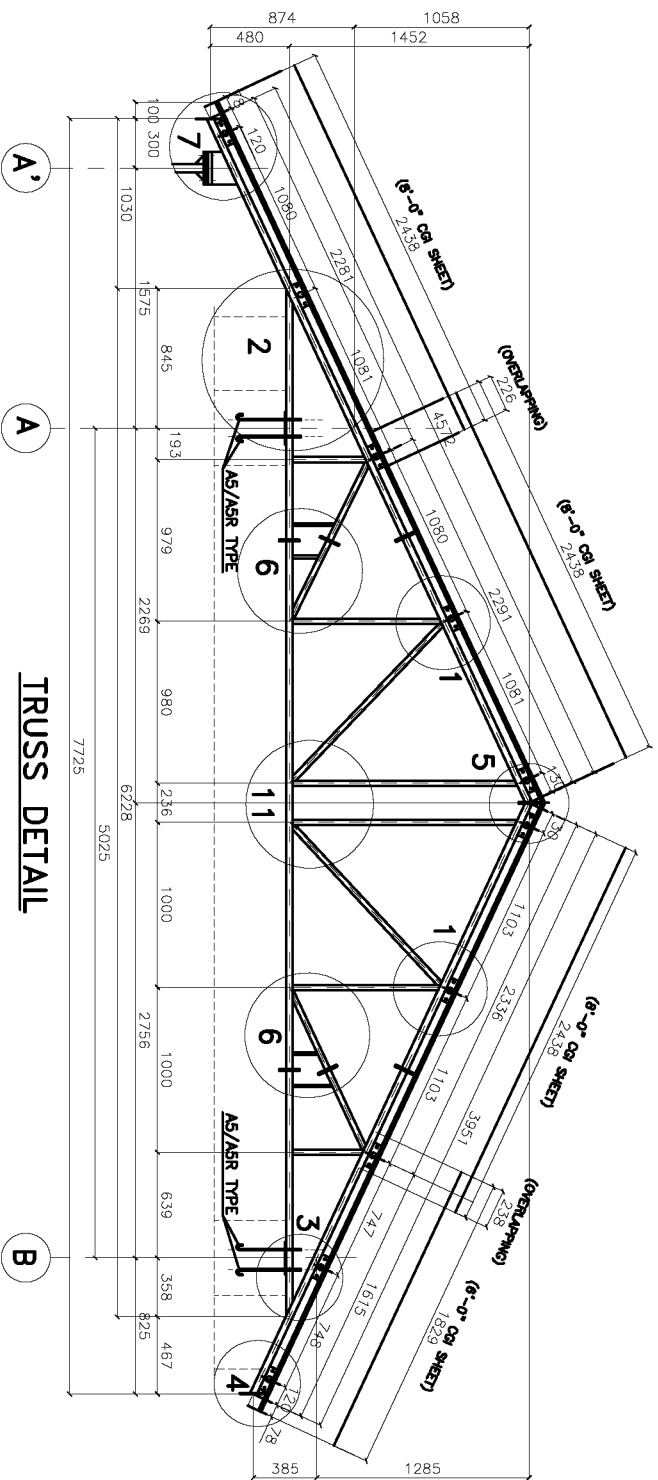
NOTE:
LONGITUDINAL BARS ARE OF 10 mm DIA
STIRRUPS ARE OF 5.5 mm DIA BAR

JOB TITLE		SCHOOL BUILDING (HILLY REGION)	
SHEET TITLE		SECTION	
SCALE	1:50		
PROJECT		GOVERNMENT OF NEPAL MINISTRY OF EDUCATION & SPORTS BASIC AND PRIMARY EDUCATION PROJECT KESHARAHAL KATAMANDU NEPAL TEL NO. 419893, 423261	
CHECKED BY:			
APPROVED BY:			
DATE	23.10.2000		
Drawing code	H-S-Att 1		
Sheet no	4		

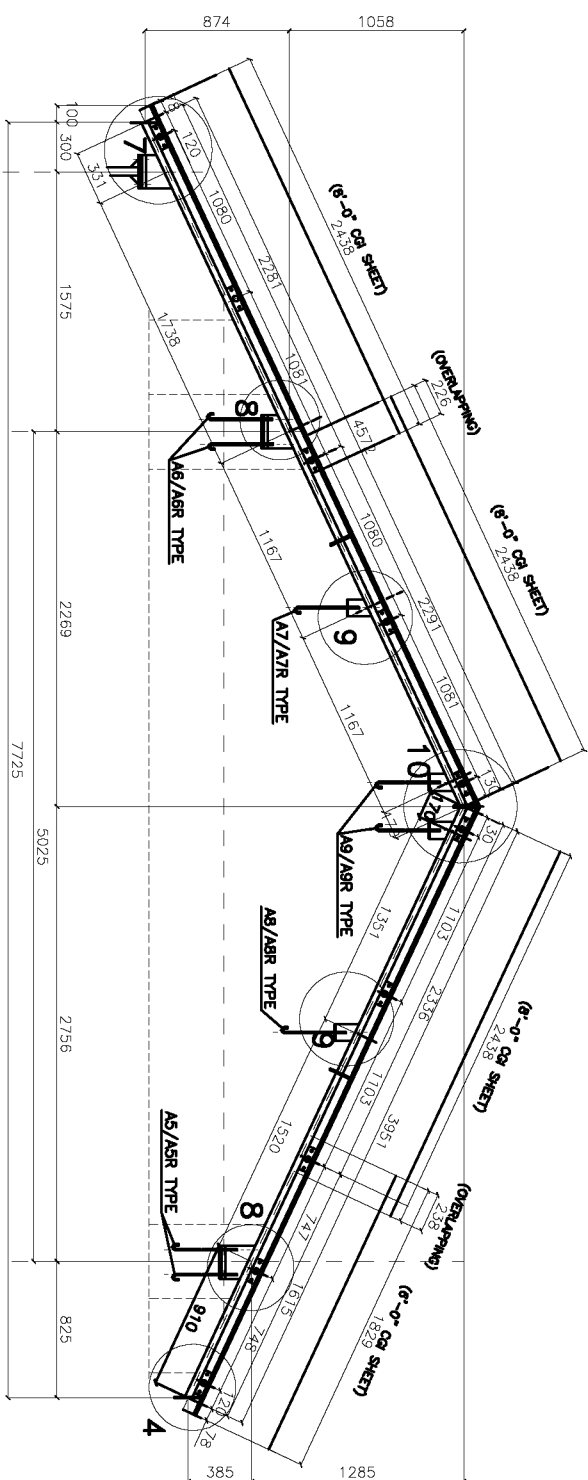


PLAN

<p>JOB TITLE</p> <p>SCHOOL BUILDING (HILLY REGION)</p>	
<p>SHEET TITLE</p> <p>TRUSS PLAN</p>	
<p>SCALE</p> <p>1:100</p>	<p>PROJECT</p> <p>GOVERNMENT OF NEPAL MINISTRY OF EDUCATION & SPORTS BASIC AND PRIMARY EDUCATION PROJECT</p> <p>KESHARMAHAL KATHMANDU NEPAL TEL NO. 412101, 423251 418983</p>
<p>CHECKED BY</p>	
<p>APPROVED BY:</p>	
<p>DATE</p> <p>23.10.2000</p>	
<p>Drawing code</p> <p>H-S-Att 1</p>	
<p>Sheet no</p> <p>5</p>	



TRUSS DETAIL

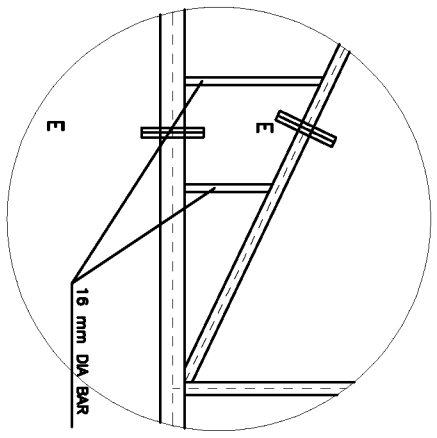


GABLE RAFTER DETAIL

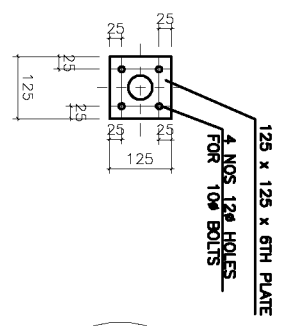
NOTE:
1. FABRICATOR HAS TO SUBMIT THE FABRICATION DRAWING BEFORE APPROVED ONLY AFTER VERIFYING WITH THE SAMPLE.

JOB TITLE	
SCHOOL BUILDING (HILLY REGION)	
SHEET TITLE	
TRUSS DETAILS	
SCALE	1 : 30

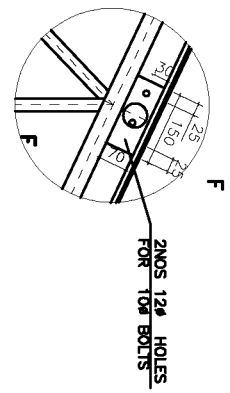
BASIC AND PRIMARY EDUCATION PROGRAMME (II)	
GOVERNMENT OF NEPAL	
MINISTRY OF EDUCATION & SPORTS	
DEPARTMENT OF EDUCATION	
SANOATHI BHAKTAPUR NEPAL.	
TEL NO.	977-1-631075
	977-1-633027
FAX NO.	977-1-630088
CHECKED BY	
APPROVED BY	
DATE	23.10.2000
Drawing code	H-S-Alt 1
Sheet no	7



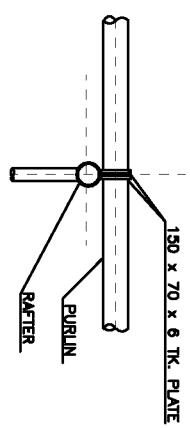
DETAIL - 6



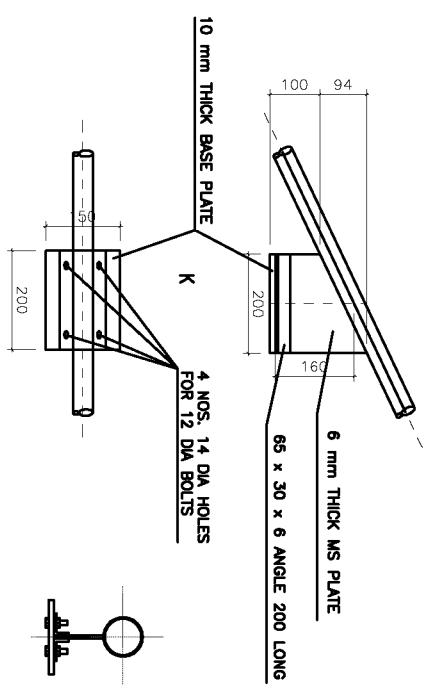
E - E



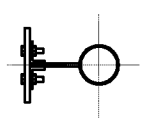
DETAIL - 1



F - F

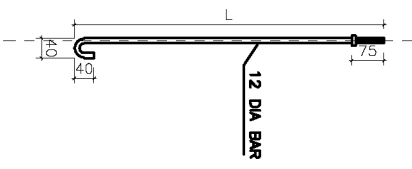


DETAIL - 8



K - K

ANCHORING BOLT

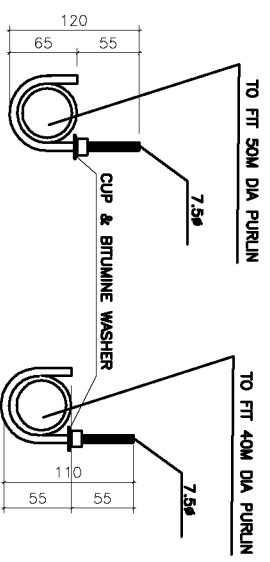


TERAL TYPE
LENGTH (L)

- L = 1140 mm FOR 16 "A1" TYPE SETS (TRUSS-SCHOOL BLOCK)
- L = 1140 mm FOR 24 "A1" TYPE SETS (GABLE-SCHOOL BLOCK)
- L = 1865 mm FOR 6 "A2" TYPE SETS (GABLE-SCHOOL BLOCK)
- L = 2555 mm FOR 6 "A3" TYPE SETS (GABLE-SCHOOL BLOCK)
- L = 1140 mm FOR 16 "A1" TYPE SETS (TRUSS-RC BLOCK)
- L = 1140 mm FOR 32 "A1" TYPE SETS (GABLE-RC BLOCK)
- L = 1865 mm FOR 8 "A2" TYPE SETS (GABLE-RC BLOCK)
- L = 2555 mm FOR 8 "A3" TYPE SETS (GABLE-RC BLOCK)
- L = 1767 mm FOR 2 "A4" TYPE SETS (GABLE-RC BLOCK)

HILL TYPE

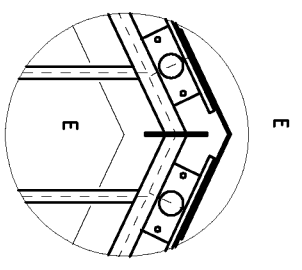
- L = 690 mm FOR 32 "A5" TYPE SETS (TRUSS-SCHOOL BLOCK)
- L = 690 mm FOR 12 "A5" TYPE SETS (GABLE-SCHOOL BLOCK)
- L = 948 mm FOR 12 "A6" TYPE SETS (GABLE-SCHOOL BLOCK)
- L = 1460 mm FOR 3 "A7" TYPE SETS (GABLE-SCHOOL BLOCK)
- L = 1382 mm FOR 3 "A8" TYPE SETS (GABLE-SCHOOL BLOCK)
- L = 1936 mm FOR 6 "A9" TYPE SETS (TRUSS-SCHOOL BLOCK)
- L = 1040 mm FOR 32 "A9" TYPE SETS (GABLE-RC BLOCK)
- L = 1040 mm FOR 12 "A9" TYPE SETS (GABLE-RC BLOCK)
- L = 1636 mm FOR 12 "A7R" TYPE SETS (GABLE-RC BLOCK)
- L = 2115 mm FOR 3 "A7R" TYPE SETS (GABLE-RC BLOCK)
- L = 2072 mm FOR 3 "A8R" TYPE SETS (GABLE-RC BLOCK)
- L = 2628 mm FOR 6 "A8R" TYPE SETS (TRUSS-RC BLOCK)
- L = 560 mm FOR 2 "A10R" TYPE SETS (TRUSS-RC BLOCK)



J-HOOK DETAIL

TERAL

HILL

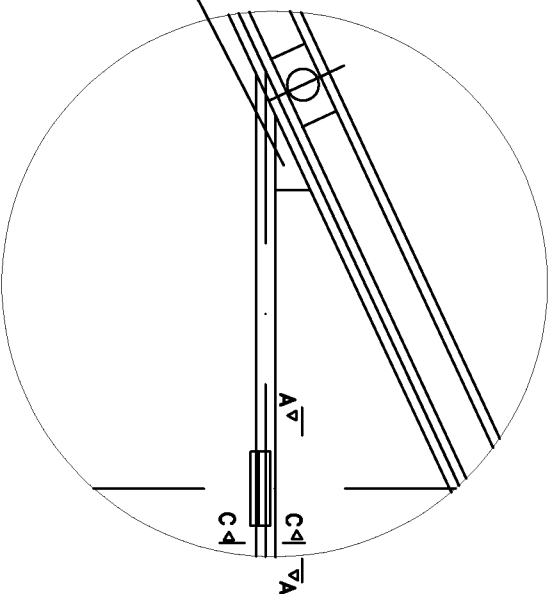
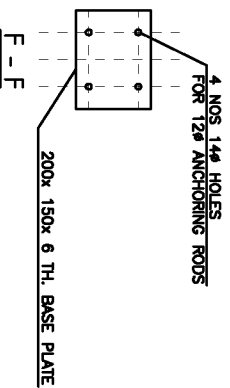
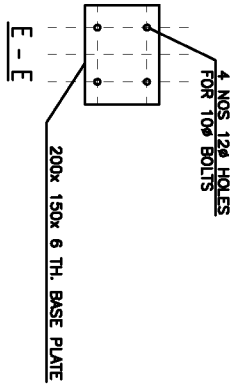
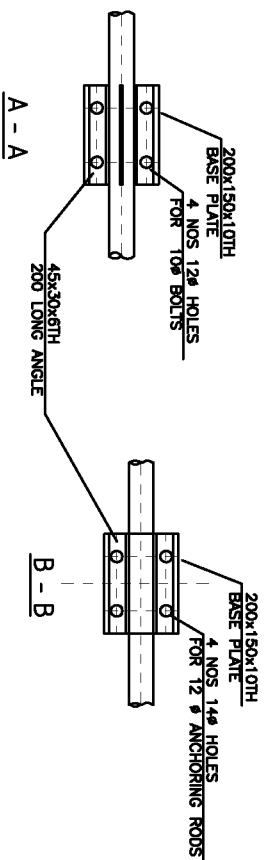
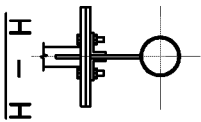
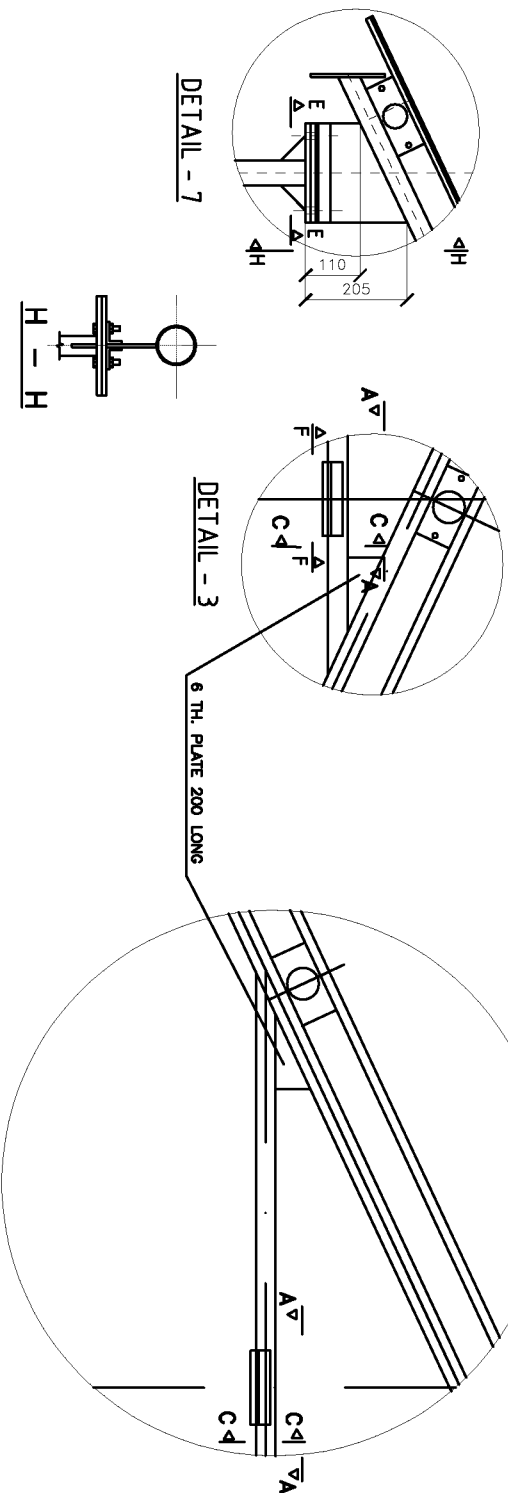


DETAIL - 5

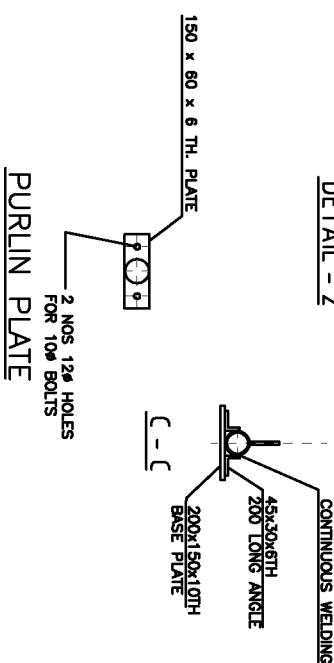
NOTE:
1. FABRICATOR HAS TO SUBMIT THE FABRICATION DRAWING BEFORE FABRICATION AND SHALL BE APPROVED ONLY AFTER VERIFYING WITH THE SAMPLE.

JOB TITLE		SCHOOL BUILDING (HILLY REGION)
SHEET TITLE		TRUSS DETAILS
SCALE	1 : 10	
BASIC AND PRIMARY EDUCATION PROGRAMME (II)		
GOVERNMENT OF NEPAL		
MINISTRY OF EDUCATION & SPORTS		
DEPARTMENT OF EDUCATION		
SANOATHI		
BHAKTAPUR		
NEPAL		
TEL NO.	977-1-631075	
	977-1-633027	
FAX NO.	977-1-630088	
CHECKED BY:		
APPROVED BY:		
DATE	23.10.2000	
Drawing code	H-S-Alt 1	
Sheet no	8	

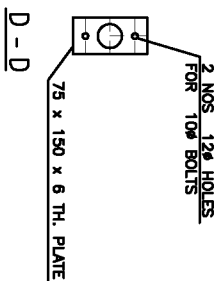
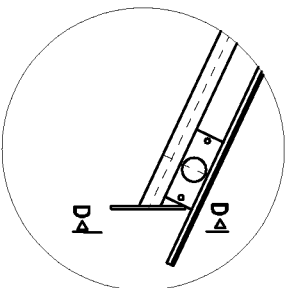
NOTE:
1. FABRICATOR HAS TO SUBMIT THE FABRICATION DRAWING BEFORE FABRICATION AND SHALL BE APPROVED ONLY AFTER VERIFYING WITH THE SAMPLE.



DETAIL - 2



PURLIN PLATE



DETAIL - 4

JOB TITLE		SCHOOL BUILDING (HILLY REGION)	
SHEET TITLE		TRUSS DETAILS	
SCALE	1 : 10		
BASIC AND PRIMARY EDUCATION PROGRAMME (II)			
GOVERNMENT OF NEPAL MINISTRY OF EDUCATION & SPORTS DEPARTMENT OF EDUCATION SANOATHI BHAKTAPUR NEPAL.			
TEL NO.	977-1-631075		
	977-1-633027		
FAX NO.	977-1-630088		
CHECKED BY			
APPROVED BY			
DATE	23.10.2000		
Drawing code	H-S-Alt 1		
Sheet no	9		

**Load Bearing Stone Wall in Mud (BW1), Tubular Steel Truss (ST1) & CGI Sheet Roof, 1 Storey
& 2 Room Building**

Gorkhapatra Code no.- 8

Drawing Code: H - S - Alt 1

S no	Name of Drawing	Sheet no
1	Plan and Elevation	1
2	Back and Side Elevations	2
3	Trench Plan	3
4	Sections	4
5	Truss Plan	5
6	Door/Window Frame and Shutters	6
7	Truss Details	7
8	Truss Details	8
9	Truss Details	9